

भारतीय राष्ट्रीय राजमार्ग प्राधिकरण
(पोत परिवहन, सड़क परिवहन और राजमार्ग मंत्रालय)
National Highways Authority of India

(Ministry of Shipping, Road Transport and Highways)

जी-5 एवं 6, सेक्टर-10, द्वारका, नई दिल्ली-110 075

G-5 & 6, Sector-10, Dwarka, New Delhi-110075

दूरभाष / Phone: 91-11-25074100/25074200

फैक्स / Fax: 91-11-25093507 / 25093514

एक्स. / Extn.: 2223 / 2318 / 2468 / 2553

No. 11041/21/2005-Admn.

20th November 2006

By e-mail/Fax/Courier

Policy Matter – Administration/Finance (130/ 2006)
(Decision taken on File No. 11013/165/2005/IT of IT Division)

Sub: Use of Wide Area Network (WAN): Information Communication & Technology (ICT) Applications.

National Highways Authority of India considers Information Communication & Technology (ICT) an important enabler for time & cost bound implementation of its projects and efficient accomplishment of the other business activities. In this regard, several ICT solutions for on line and real time data transfer had been developed in the NHAI, some of which are:

- Corporate mailing solution for all type of data transfer.
- Specialised applications which are accessed through authorized user ID and passwords.

Applications	Used for
Computerised Project Information System (CPIS)	Project management of on-going works.
Road Information System (RIS)	Operation & maintenance of completed stretches.
Project Financial Management System (PFMS)	Financial management.
Toll Fee Collection System	Toll Fee transaction.

2. For on-line & real-time data transfer through above applications a state-of-the-art **Wide Area Network (WAN)** interconnecting all field units, toll plaza with NHAI Head Office and the Ministry has been established. At select 25 locations Video Conferencing facility is also available. The list of sites so far connected by WAN, Video Conferencing, e-mail addresses, date on which WAN link connectivity given by BSNL and CPIS & RIS user ID is at **Annexure – I**. Work is on for connecting the balance sites and they will also be operational soon.

Consolidated list of individual e-mail addresses of NHAI officials is at <http://mail.nhai.org> which can also be accessed through Authority website <http://www.nhai.org>. The User Manual for data transfer through WAN using Corporate Mailing Solutions and/ or through specialised applications is at **Annexure – II**.

Contd. ...2....

3. In view of above, it has been decided that all Divisions at Headquarter, Field Units and Toll Plazas will start immediately sending Reports / Returns and other non - confidential communication through electronic means through WAN where BSNL has given WAN connectivity as under:-

- (1) Written communications of general type.
- (2) Issue of Circulars / Notices.
- (3) Video Conferencing.
- (4) Submission of Monthly Works Progress Reports and other Periodical Reports.

(5) Data transfer through Specialised Application as under:-


Specialised Application	Date by which to send the data and the period
CPIS	Monthly - 25 th of every month. Period to be covered will be from 25 th of previous month up to 24 th of the current month.
RIS	Monthly - 15 th of every month. Period to be covered will be from 15 th of previous month up to 14 th of the current month.
PFMS Financial Data	Monthly - 30 th / 31 st of every month. Period to be covered will be from 1 st of previous month up to 29 th / 30 th of the current month.
Expenditure Information Statement	Monthly - 26 th of the every month. Period to be covered will be from 26 th of previous month up to 25 th of the current month.

For any difficulties, the IT Division can be contacted immediately.

4. Project Director will be over all and personally responsible for ensuring timely and correct data transfer over the WAN on the dates as mentioned above. He will, however, designate officers/officials in his PIU who would be responsible for collecting the information and transferring the same after taking the approval of the Project Director.

Non-compliance to the instructions will be viewed seriously.

This issues with the approval of Chairman, NHAI.


(G.P.Chand)
General Manager (Admn.)

To

1. PS to Chairman
2. All Members
3. All Officers at HQs
4. All PIUs / CMUs / SPVs
5. Secretary, MoSRT&H
6. PS to Hon'ble Minister / PS to MoS

ANNEXURE-I

Sites Connected with Wide Area Network with their User-ids : Status as on 17.11.06

S.No	Location	WAN Link Commissioned by BSNL (VC)			
HO/IDC/MORSTH					
1	NHAI Head Quarters: G-5& 6, Sector-10, Dwarka, New Delhi	7.8.2006 (VC)			
2	Ministry of Shipping, Road Transport and Highways: Transport Bhawan, Parliament Street, New Delhi				
3	Internet Data Centre at VSNL GK II, New Delhi	7.8.2006			
S.No	Location	E-Mail Address	CPIS & RIS User ID	WAN Link Commissioned by BSNL (VC)	PD Name
Field Offices (PIUs/CMUs)					
4	Agra	agra@nhai.org	piuagra	12.7.2006	Sh. Ashwani Kumar
5	Allahabad	ald@nhai.org	piuallahabad	12.7.2006	Sh. A K Singh
6	Ambala	amb@nhai.org	cmuambala	12.7.2006	Sh. P K Sharma
7	Ahemdabad	ahd@nhai.org	piuahmedabad	16.9.2006 (VC)	Sh. S.K. Survase
8	Bangalore	bangalore@nhai.org	piubangalore	13.9.2006 (VC)	Sh. Manoj Kumar
9	Bhilwara	bhilwara@nhai.org	piubhilwara	12.7.2006	Sh. Sudhir Gupta
10	Bhubneshwar	bhu@nhai.org	piubhubaneswar	22.9.2006 (VC)	Sh. D. Sarangi
11	Bongaigaon	bongaigaon@nhai.org	piubongaigaon	28.8.2006	Sh. Raj Chakraborty
12	Berahmpur	ber@nhai.org	piuberhampur	11.9.2006	Smt. Madhavi Sukanya
13	Chennai	chennai@nhai.org	piuchennai	12.7.2006 (VC)	Sh. V Chinna Reddy
14	Chennai PC	chennaiport@nhai.org	piuchenaipc	25.7.2006	Sh. R Srinivassan
15	Chittorgarh	chit@nhai.org	piuchittorgarh	12.7.2006	Sh Uttam Kumar
16	Chittorgarh (EW-V)	chit@nhai.org	piuchittorgarhew	12.7.2006	Sh. R.C. Mehta
17	Cochin	cochin@nhai.org	piucochin	12.7.2006	Sh S R Raju
18	Coimbatore	coimb@nhai.org	piucoimbatore	25.7.2006	Sh. D T Sridhar
19	Chitradurga	chi@nhai.org	piuchitradurga	16.10.2006	Sh. R.K. Pandey
20	Durgapur	dur@nhai.org	piudurgapur	28.8.2006 (VC)	Sh. Nirmal Mondal
21	Dhanbad	dhan@nhai.org	piudhanbad	28.9.2006	Sh. Sandeep Khare
22	Dharwar	dha@nhai.org	piudharwad	27.10.2006	Sh. P.D. Arora
23	Ghaziabad	gha@nhai.org	piughaziabad	13.9.2006	Sh. R K Garg
24	Gorakhpur	gorakhpur@nhai.org	piugorakhpur	14.9.2006	Sh. A C Srivastava
25	Gurgaon	gur@nhai.org	piugurgaon	12.7.2006	Sh. R.P. Indoria
26	Gurgaon Bilaspur	gur@nhai.org	piugurgaonbilaspur	25.7.2006	Sh. Ajay Bishnoi
27	Gwalior	gwalior@nhai.org	piugwalior	12.7.2006 (VC)	Sh Atul kumar
28	Guwahati	gwa@nhai.org	piuguwahati	13.10.2006 (VC)	Sh. D. Gogoi

ANNEXURE- I

Sites Connected with Wide Area Network with their User-ids : Status as on 17.11.06

S.No	Location	E-Mail Address	CPIS & RIS User ID	WAN Link Commissioned by BSNL (VC)	PD Name
29	Himmatnagar	him@nhai.org	piuhimmatnagar	13.9.2006	Sh C.S.Pawar
30	Hyderabad	hyd@nhai.org	piuhyderabad	12.7.2006	Sh I Janardhan Reddy
31	Jaipur	jai@nhai.org	piujaipur	12.7.2006 (VC)	Sh. Rakesh Gupta
32	Jalandhar	jal@nhai.org	piujalandhar	12.7.2006 (VC)	Sh D.S.Dehal
33	Jammu	jam@nhai.org	piujammu	12.7.2006	Col. V.K. Pardesi
34	Jhansi EW	jha@nhai.org	piujhansiew	31.8.2006	Sh. Jitender Kumar
35	Kanpur	knp@nhai.org	piukanpur	12.7.2006	Sh. A. Gautam
36	Krishnagiri	kri@nhai.org	piukrishnagiri	6.10.2006	Sh. Ramesh Babu
37	Kota	kota@nhai.org	piukota	16.10.2006 (VC)	Sh. Anoop Kulshreshta
38	Kharagpur	kha@nhai.org	piukharagpur	17.10.2006	Sh. R.P.Singh
39	Lucknow	luc@nhai.org	piulucknow	12.7.2006 (VC)	Sh. A.K. Gupta
40	Madurai	mad@nhai.org	piumadurai	12.7.2006	Sh. S S Sselvaraj
41	Mangalore	man@nhai.org	piumangalore	18.8.2006	Sh PN Gawasana
42	Moradabad	mor@nhai.org	piumoradabad	25.9.2006	Sh. A C Mathur
43	Muzaffarpur	muz@nhai.org	piumuzaffarpur	16.10.2006 (VC)	Sh. A K Verma
44	Nagaon	nagaon@nhai.org	piunagon	28.8.2006	Dr. Ramanaji
45	Nagpur	nag@nhai.org	piunapur	18.8.2006 (VC)	Sh. D.O.Tawade
46	Naini	naini@nhai.org	piunaini	12.7.2006	Sh. Aveen Panja
47	Nellore	nel@nhai.org	piunellore	12.7.2006	Sh. A K Razzak
48	Pune	pune@nhai.org	piupune	28.8.2006 (VC)	Sh. P.D.Arora
49	Palakkad	palak@nhai.org	piupalakkad	3.10.2006	Sh. M.Krishnan
50	Palanpur	pal@nhai.org	piupalanpur	15.9.2006	Col Khushwant Singh
51	Paradip	prdp@nhai.org	piuparadip	6.10.2006	Sh. R. Sashidhar
52	Rajkot	rajkot@nhai.org	piurajkot	10.11.2006	Sh. S.S.Singhvi
53	Sagar	sagar@nhai.org	piusagar	18.8.2006	Col VAJ Singh
54	Seoni	seoni@nhai.org	piuseoni	12.7.2006	Sh.S K Chaudhari
55	Silliguri-kishangarh	sil@nhai.org	piusiliguri	12.7.2006	Sh. R. P. Singh
56	Sonepat	son@nhai.org	piusonepat	25.7.2006	Sh. Nisar Ahmed
57	Shivpuri	shiv@nhai.org	piushivpuri	23.10.2006	Sh. S.K. Malik
58	Srikakulam	sri@nhai.org	piusrikakulam	12.7.2006	Sh. R K Chawla
59	Software Technology Park, Okhla, New Delhi	edp@nhai.org	edpstp	12.7.2006 (VC)	Sh. R Balaji
60	Tirunelveli	tir@nhai.org	piutirunelveli	4.10.2006	Sh. V C Sharma

Sites Connected with Wide Area Network with their User-ids : Status as on 17.11.06

S.No	Location	E-Mail Address	CPIS & RIS User ID	WAN Link Commissioned by BSNL (VC)	PD Name
61	Thoothukudi(PC)	thoo@nhai.org	piuthoothukudi	4.10.2006	Sh. T.V. Siva ji
62	Tiruchirapalli	tiru@nhai.org	piutrichy	6.10.2006 (VC)	Sh. K Viswanathan
63	Udaipur	uda@nhai.org	piuudaipur	9.8.2006 (VC)	Sh. Uttam Kumar
64	Udaipur EW	uda@nhai.org	piuudaipurew	9.8.2006	Sh. Vaibhav Mittal
65	Vijaywada	vij@nhai.org	piuvijayawada	28.8.2006	Sh. D Laxmi Naryan Rao
66	Varanasi	var@nhai.org	piuvaranasi	12.7.2006 (VC)	Sh. M.Chandrashekhar
67	Vishakhapatnam (PC)	vis@nhai.org	piuvishakhapatnampc	27.10.2006 (VC)	Sh. K.Srinivasulu
68	Vadodara	vado@nhai.org	piuvadodara	3.11.2006	Sh. C.K.Sinha
S.No	Location	E-Mail Address	WAN Link Commissioned by BSNL (VC)		PD Name
Toll Plazas					
69	Ambala Khanna	sambhu@nhai.org	27.9.2006		Sh. P K Sharma
70	Amravati Bypass TP1	amarb@nhai.org	28.8.2006		Sh. Sandeep Tanpure
71	Ankapalli - Tuni	vempadu@nhai.org	18.10.2006		Sh. R.K.Chawla
72	Ankapalli Vishakhapatnam	agnampudi@nhai.org	25.7.2006		Sh. R.K.Chawla
73	Barwa Adda Panagarh	gauri@nhai.org	27.9.2006		Sh. Nirmal Mondal
74	Bhilwara Chittorgarh	jojro@nhai.org	25.9.2006		Sh. Rakesh Gupta
75	Bonumoru- Gundugolanu	tanuku@nhai.org	16.10.2006		Sh. N. Ramakrishna
76	Budbud Palsit	palsit@nhai.org	10.10.2006		Sh.Nirmal Mandal
77	Chennai Bypass	chennaib@nhai.org	18.8.2006		Sh. V Chinna Reddy
78	Concrete Cable Stayed Bridge	nainitp@nhai.org	12.7.2006		Sh. A Panja
79	Ghaziabad-Hapur & Hapur Bypass	dasna@nhai.org	6.10.2006		Sh. R K Garg
80	Gopalpur Toll Plaza	gopalpur@nhai.org	27.9.2006		Sh.D.Sarangi
81	Himmatnagar Chioda	kath@nhai.org	13.9.2006		Sh. C S Pawar
82	Hosur Krishnagiri	krish@nhai.org	11.10.2006		Sh. Ramesh Babu
83	Kapperla - Vishakhapatnam	nathavalasa@nhai.org	28.8.2006		Sh. R K Chawla
84	Khanna Jalandhar	doraha@nhai.org	18.8.2006		Sh. P K Sharma
85	Kosi Agra	srinagar@nhai.org	13.10.2006		Sh. R K Garg
86	Kotputli Chandwazi	mano@nhai.org	12.10.2006		Sh. Ajai Bishoni
87	Morana Gwalior	chou@nhai.org	16.10.2006		Sh. Ashwini Kumar
88	Manor Baseen Creek Dahisar	khanwade@nhai.org	14.11.2006		Sh. S.B.Apte
89	Nandigram Srikakulam	madpam@nhai.org	10.10.2006		Sh. R K Chawla
90	Panipat Ambala	karnal@nhai.org	18.8.2006		Sh. P K Sharma

ANNEXURE- I**Sites Connected with Wide Area Network with their User-ids : Status as on 17.11.06**

S.No	Location	E-Mail Address	WAN Link Commissioned by BSNL (VC)	PD Name
Toll Plazas				
91	Ratanpur Himatnagar	vant@nhai.org	3.11.2006	Sh. C.S.Pawar
92	Samakhyali Gandhidham	samkh@nhai.org	16.9.2006	Col Khushwant Singh
93	Satara Khandala Watharsarol	anewadi@nhai.org	13.11.2006	Sh. P.D. Arora
94	Vijaywada Chilkarupet	kaza@nhai.org	13.9.2006	Sh. D. Laxminarayan Rao
95	Vijaywada Gundugolanu	pattipadu@nhai.org	13.9.2006	Sh. D. Laxminarayan Rao
96	Vijaywada Gundugolanu Incl Eluru Bypass	kalaparru@nhai.org	28.8.2006	Sh. D. Laxminarayan Rao
97	Walajapet- Kanchipuram	chen@nhai.org	8.9.2006	Sh.Sundra rajan

WAN Application Usage Training Guide

INDEX

Content.....	Page
General Instruction for operation	1
Video Conferencing Solution.....	1
Corporate Mailing Solution	2
Data Transfer through WAN.....	3
Computerized Project Information System (CPI\$).....	4
Road Information System	4
Toll Collection System	5

General Instruction for operation

To open application please follow the instructions given below

1. Make Sure that Patch Cord is connected to network port of computer
2. If it is connected then you will see two-computer icon blinking at right side corner on taskbar.
3. Click the Internet Explorer icon on your desktop to open application like CPIS, RIS & Toll Collection
4. Click the Microsoft Outlook icon on your desktop to open mailing application

Video Conferencing Solution

This solution can be used to do conferencing with other PIU, MOSTRH, STP & Head Office. To start the video conferencing

- a. Power on the Plasma & Camera kit
- b. Click on phonebook
- c. Select the desired location name to connect
- d. Press call button on the remote to connect & start Video Conferencing.

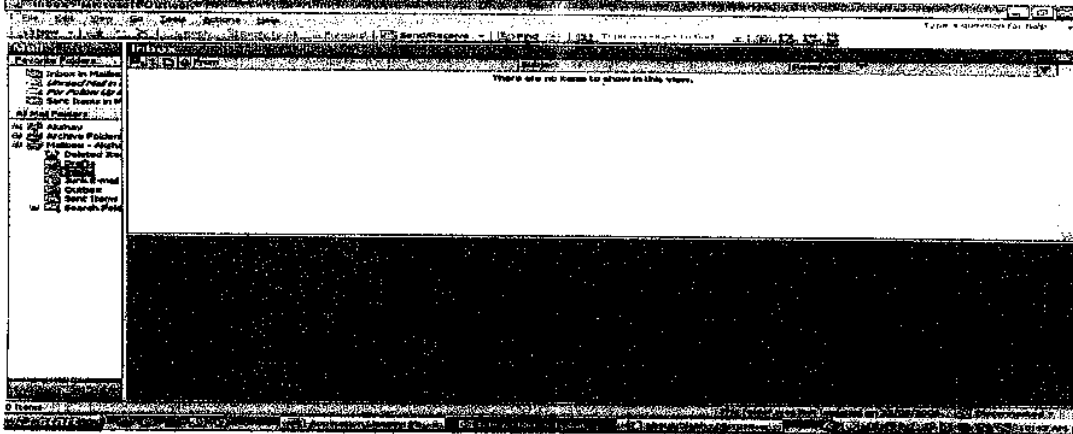
In case of any assistance to operate any of mentioned applications please call IT-Helpdesk at Head Office at below mentioned number or e-mail on: **ithelpdesk@nhai.org** , 011-25074200 & 011-25074100 Extn 1310

Corporate Mailing Solution

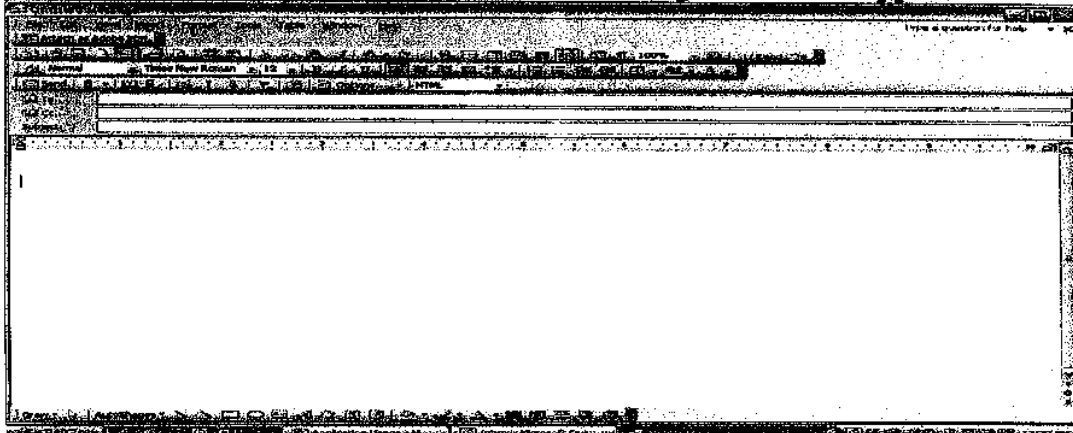
This solution will be used to electronically transfer data excluding application like CPIS, RIS, & Toll Collection System. It is also used for exchange of emails with other PIU & Head Office.

Steps to Use

To open the email software click to **Microsoft Outlook** icon at your desktop. The application will be open as shown below



Click on **New** button to write an email, following screen will appear



Type the email address of recipient in **To** column, type subject of the email in **subject** column & write the message in the message box. To attach the file of size **less than 2 Mega Bytes**, go to Insert menu & select File then locate desired file to be attached.

To copy File of size **more than 2 Mega Bytes**, Press Start button on your taskbar then go to RUN & type `\\nhaisq\dump` or `\\192.168.0.80\dump`, then it will ask for an authentication (User Name & Password). You can use the same which has already been provided by the Head Office.

Data Transfer Through WAN

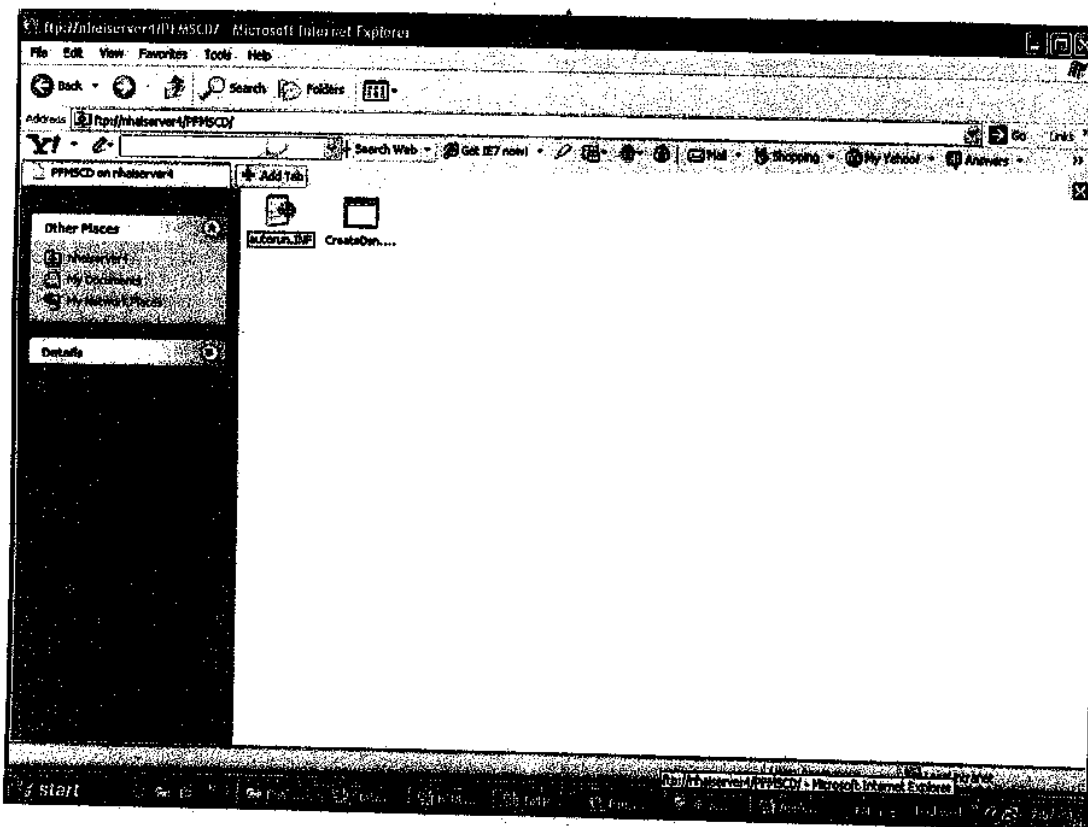
This solution will be used for transfer data of more than 2 MB through WAN between field office to the specific division.

Steps to Use

Open the Internet Explorer and type the URL as ftp://192.168.0.19/(Division name) and then press Go button. Example – For sending the file to IT division

Type URL as ftp://192.168.0.19/ITDivision

Following screen will be opened



Copy the file from your desktop and paste the file at above shared folder space.

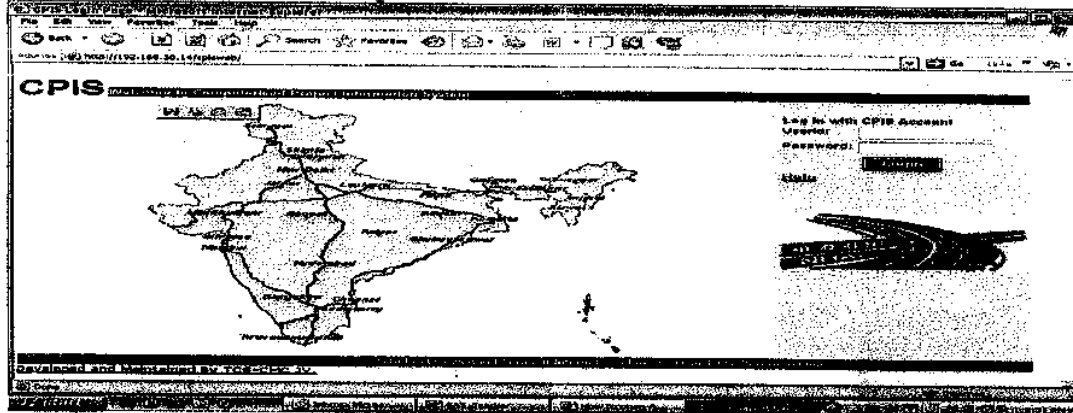
Send a email to the recipient of the file to get the file copied from shared folder

Computerized Project Information System (CPIS)

This application is used for management of ongoing projects. To open the applications kindly open the Internet Explorer & type the URL as mentioned below in address field & then press Go button.

<http://192.168.30.14/cpisweb>

Following screen will be open



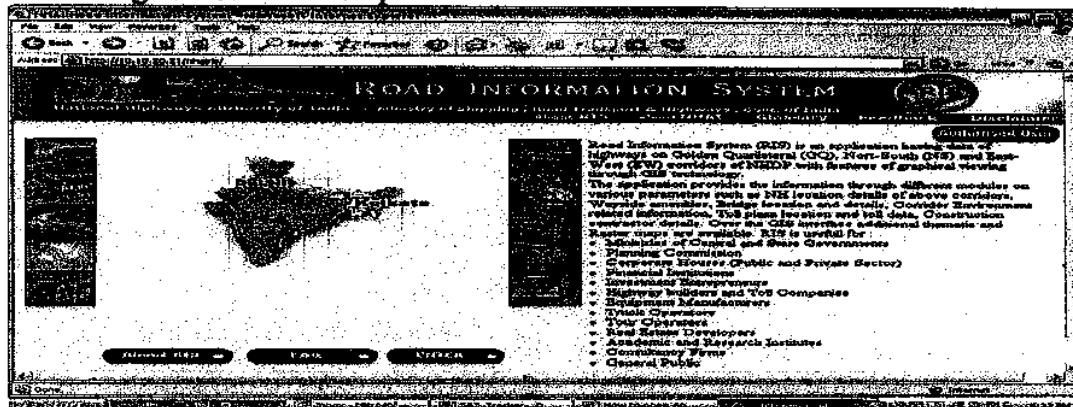
Enter your Username & Password in the field & start using the application

Road Information System

This application is used for operation & maintenance of completed road stretch. To open the applications kindly open the Internet Explorer & type the URL as mentioned below in address field & then press Go button.

<http://10.10.20.21/nhairis>

Following screen will be open



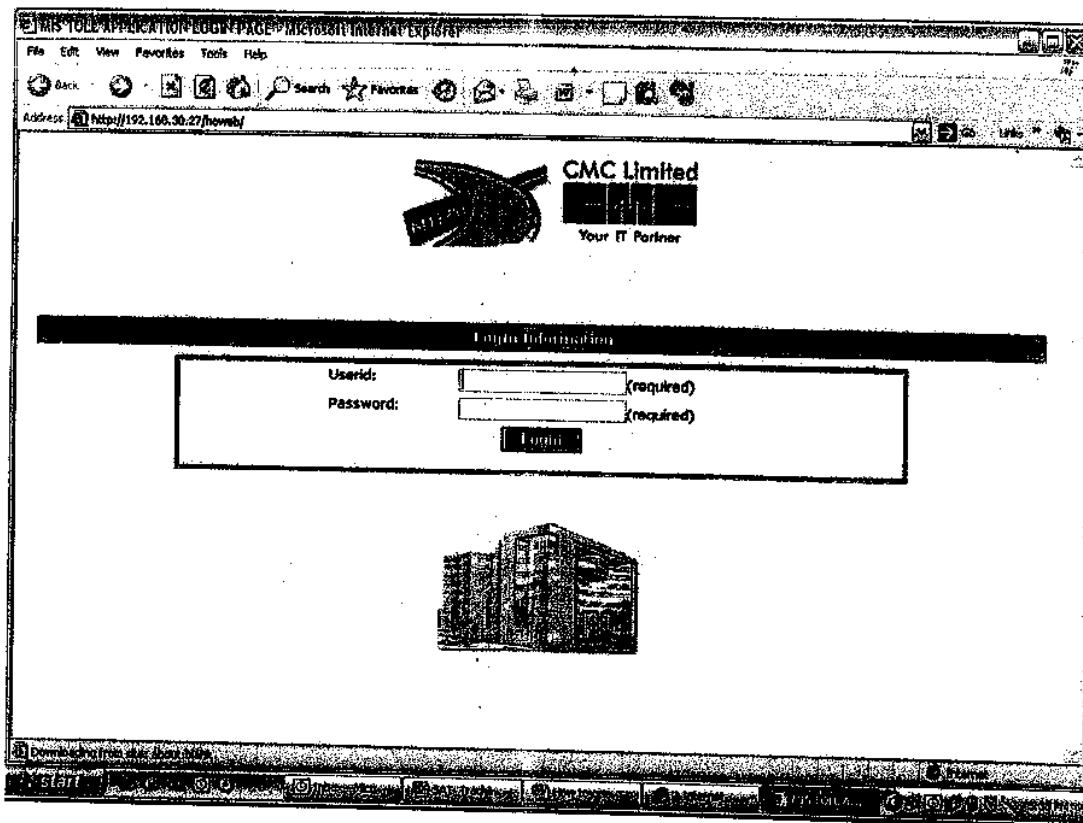
Click Authorized User tab & enter your username & password to start using the application.

Toll Collection System

This application is used for toll collection. To open the applications kindly open the Internet Explorer & type the URL as mentioned below in address field & then press Go button.

<http://192.168.30.27/howeb>

Following screen will appear



Enter your Username & Password in the field & start using the application